

SNUG

Comfort Series **2023**



03
BEDS



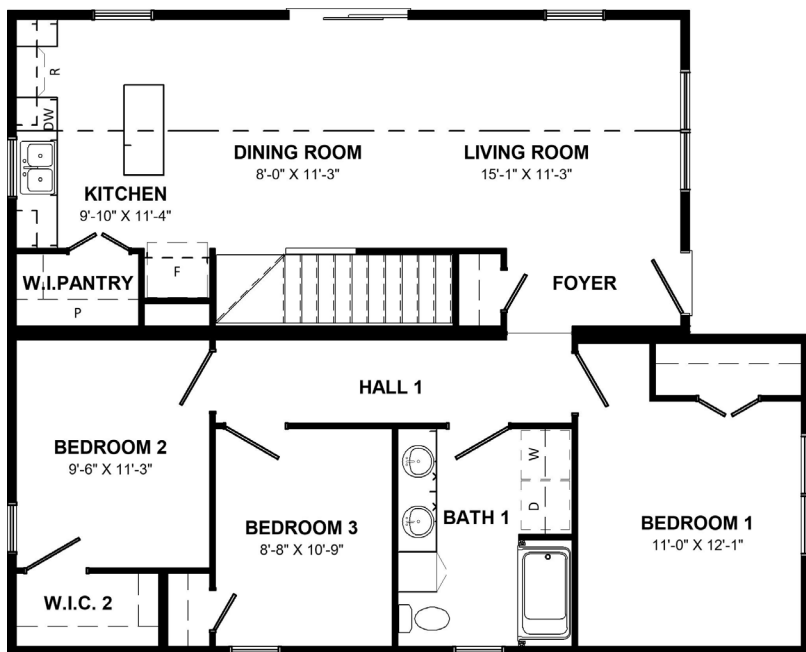
1184
SQ. FT.



01
BATH



32x40
W x L



What We Love

- L-shaped kitchen with island
- Walk in Pantry
- Cathedral Ceiling through main living area
- Front Foyer Storage
- Open Stairwell with Half Wall
- Open Floorplan
- Main Floor Laundry
- Bed 2 Walk in Closet

Kent  Homes

**All renderings & pictures shown are for illustration purposes only. Some items shown may not be standard and/or represent the exact product or finish.*

SNUG

Comfort Series **2023**

 **03**
BEDS

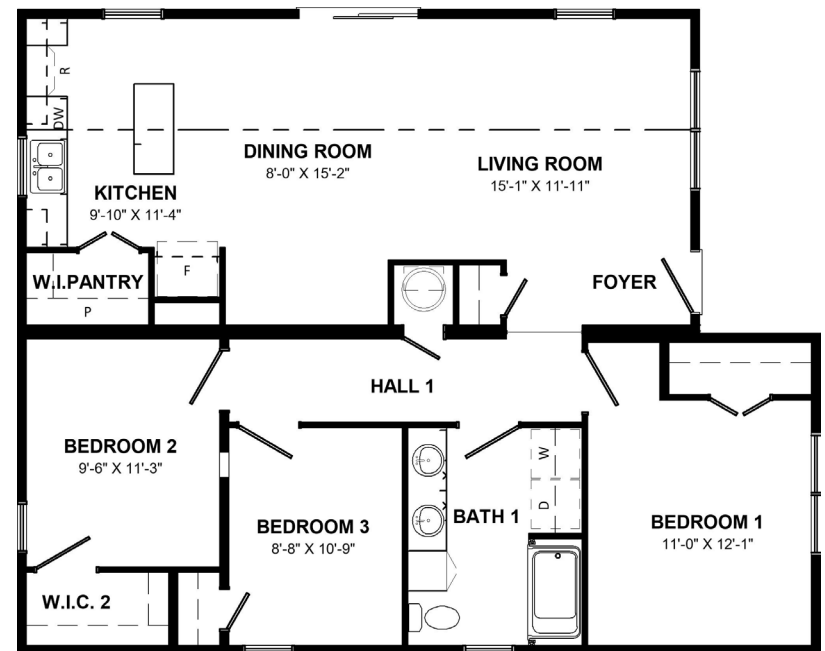
 **1184**
SQ. FT.

 **01**
BATH

 **32x40**
W x L



**ALTERNATE
NO BASEMENT
FLOORPLAN**



Kent  **Homes**

**All renderings & pictures shown are for illustration purposes only. Some items shown may not be standard and/or represent the exact product or finish.*