

# MARINER

Comfort Series **2023**



**03**  
BEDS



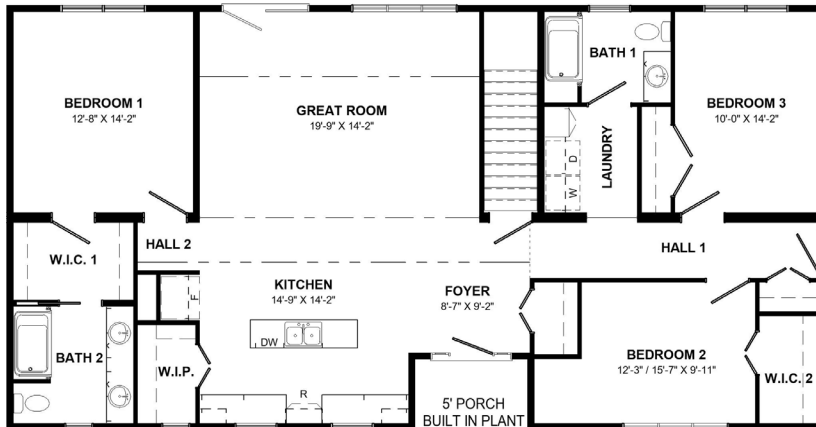
**1700**  
SQ. FT.



**02**  
BATH



**30x58**  
W x L



## What We Love

- L-shaped kitchen with island
- Walk in Pantry
- Bed 1 ensuite with double vanities
- Cathedral Ceiling through main living area
- Spacious Bedrooms with generous closets
- Welcoming Foyer with storage
- Welcoming exterior
- Main Floor Laundry
- Rear Atrium Ceiling (9ft in Dining and Living area)

Kent  Homes

*\*All renderings & pictures shown are for illustration purposes only. Some items shown may not be standard and/or represent the exact product or finish.*

# MARINER

Comfort Series **2023**



**03**  
BEDS



**1700**  
SQ. FT.



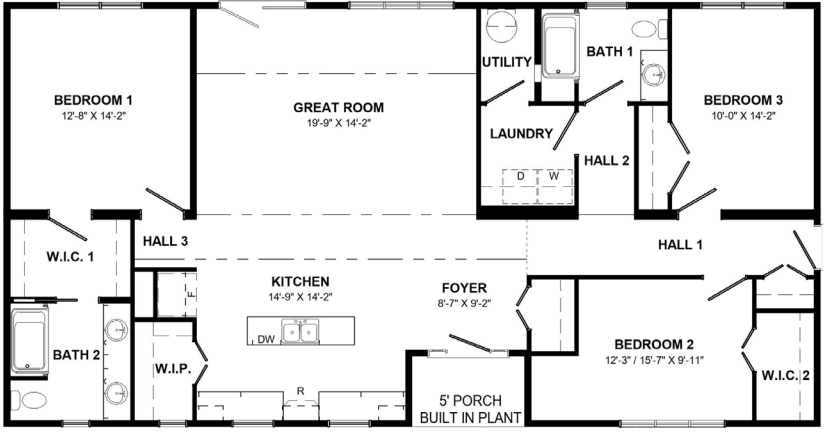
**02**  
BATH



**30x58**  
W x L



**ALTERNATE  
NO BASEMENT  
FLOORPLAN**



**Kent Homes**

*\*All renderings & pictures shown are for illustration purposes only. Some items shown may not be standard and/or represent the exact product or finish.*