

# WINTERHAVEN

Comfort Series **2023**



**03**  
BEDS



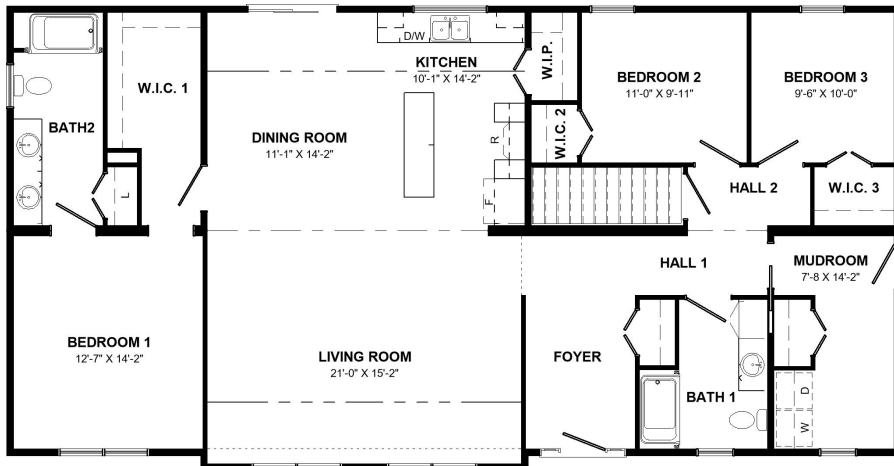
**1822**  
SQ. FT.



**02**  
BATH



**30x60**  
W x L



## What We Love

- L-shaped kitchen with large island
- Walk in Pantry
- Spacious Front Foyer
- Cathedral Ceiling through main living area
- Ensuite Bath
- Walk in Closets at Bedrooms
- Generously sized Rooms
- Mudroom with Main Level Laundry
- Side door for potential future attached garage
- Linen storage

Kent  Homes

*\*All renderings & pictures shown are for illustration purposes only. Some items shown may not be standard and/or represent the exact product or finish.*

# WINTERHAVEN

Comfort Series **2023**



**03**  
BEDS



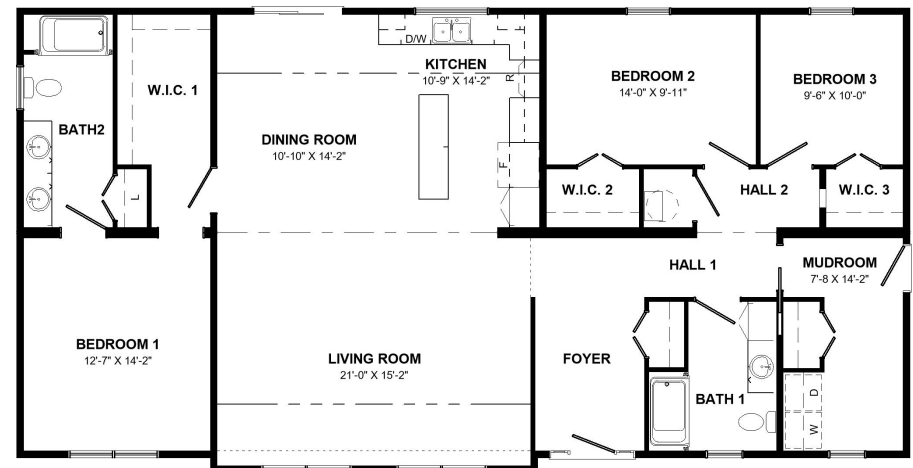
**1822**  
SQ. FT.



**02**  
BATH



**30x60**  
W x L



**ALTERNATE  
NO BASEMENT  
FLOORPLAN**

Kent  Homes

*\*All renderings & pictures shown are for illustration purposes only. Some items shown may not be standard and/or represent the exact product or finish.*